

PHASE 2 MODULAR CLASSROOMS AT COBBLESTONE ELEMENTARY SCHOOL

PLUMAS LAKE ELEMENTARY SCHOOL DISTRICT

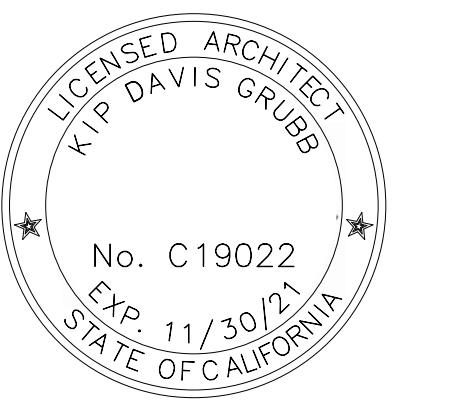
DSA APP: ___ - ___ FILE NO: ___ - ___

DSA APP. NO: ___ - ___



STUDIO

3701 Business Drive Suite 200
Sacramento, CA 95820
Phone: (916) 365-9655



LIST OF ABBREVIATIONS

A A/C AD AFF AHU ALUM ANOD ARCH @	AIR CONDITIONING AREA DRAIN ABOVE FINISHED FLOOR AIR HANDLING UNIT ALUMINUM ANODIZED ARCHITECT AT	F FO FOM FOS FOW FRG FSP FT FV	FINISHED OPENING FACE OF CONCRETE FACE OF MASONRY FACE OF STUD FIBER REINFORCED GYPSUM FIRE STANDPIPE FEET FIELD VERIFY	PL PLUMB PR PSI PSF PVC	PLUMBING PAIR POUNDS PER SQUARE INCH POUNDS PER SQUARE FOOT POLYVINYL CHLORIDE
B BD BLDG BO	BOARD BUILDING BOTTOM OF	G GALV GFRG GL GWB GYP	GAUGE GALVANIZED GLASS-FIBER-REINFORCED CONCRETE GLASS-FIBER-REINFORCED GYPSUM GYPSUM WALL BOARD GYPSUM	R RAD RCP RD REF REQD REV RH RM RTU	RISER OR RADIUS RADIUS REFLECTED CEILING PLAN ROOF DRAIN REFRIGERATOR REQUIRED REVISION RELATIVE HUMIDITY ROOM ROUGH OPENING ROOF TOP UNIT RAIN WATER LEADER
C CH CFGI	CELLSUS COAT HOOK CONTRACTOR FURNISHED, CONTRACTOR INSTALLED CORNER GUARD CONTINUOUS INSULATION CONTROL JOINT CENTERLINE CEILING CLOSED CLEAR CMU COL CONC CONC CORR CT CTJ CUH	H HT HBR HBR HM HPT HR HT	HIGH HOSE BIBB HEADER HOLLOW METAL HIGH POINT HOUR HEIGHT	S SAM SECT SIM SPEC SS STD STS STRUCT	SMOKE DETECTOR SELF ADHESIVE MEMBRANE SCHED. SCHEDULE SECTION SIMILAR SPECIFICATION STAINLESS STEEL STANDARD SELF TAPPING SCREW STRUCTURAL
D DEG DEMO DF DIA DIM DN DN DWGS	DEEP DEGREE DEMOLITION DRINKING FOUNTAIN DIAMETER DIMENSION DOWN DRAIN DRAWINGS	J JAN	JANITOR (NOT USED)	T TEL TEMP THK TOC TOP TOS TOP TOW TYP TO	TREAD TELEPHONE TEMPORARY THICK TOP OF CONCRETE TOP OF MASONRY TOP OF PARAPET TOP OF SLAB, TOP OF STEEL TOP OF WALL TYPICAL TOP OF
E EA EJ EFS EL ELEV ELEV EOS ERD EQ EQIP EWC EXIST EXP EXT	EACH EXPANSION JOINT EXTERIOR INSULATION AND FINISH SYSTEM ELEVATION ELECTRICAL ELEVATOR EDGE OF SLAB EXISTING ROOF DRAIN EQUAL EQUIPMENT ELECTRIC WATER COOLER EXISTING EXPOSED EXTERIOR	M MACH RM MAX MFR MECH MEZZ MIN MO	MACHINE ROOM MAXIMUM MANUFACTURER MECHANICAL MEZZANINE MINIMUM MASONRY OPENING	U UL UNO	UNDERWRITERS LABORATORIES UNLESS NOTED OTHERWISE
F FA FACP FDC FLOOR FEC FE FG FHC FIN FLR FND	FAHRENHEIT FIRE ALARM FIRE ALARM CONTROL PANEL FIRE DEPARTMENT CONNECTION FLOOR DRAIN FIRE EXTINGUISHER CABINET FIRE EXTINGUISHER FINISH GRADE FIRE HOSE CABINET FINISH FLOOR FOUNDATION	N NA NIC NOM NTS	NOT APPLICABLE NOT IN CONTRACT NOMINAL NOT TO SCALE	W W/ W/O WOOD WP WRB	WITH WITHOUT WOOD WALL HYDRANT WORKING POINT WEATHER RESISTIVE BARRIER
O OC OD	ON CENTER OUTSIDE DIAMETER; OUTSIDE DIMENSION OVERFLOW DRAIN OVERHEAD DOOR OPPOSITE HAND OPPOSITE ORIGINAL	Q Q	ON CENTER OUTSIDE DIAMETER; OUTSIDE DIMENSION OVERFLOW DRAIN OVERHEAD DOOR OPPOSITE HAND OPPOSITE ORIGINAL	X XYZ	(NOT USED)
P P PLAS	PLASTIC LAMINATE PLASTER				

GENERAL NOTES

- PROJECT MUST COMPLY WITH TITLE 24, PARTS 1-9 AND 12 IN ACCORDANCE WITH TITLE 24, PART 1, 4-305
- CONTRACTOR TO BE IN COMPLIANCE WITH CFC CH. 33 - FIRE SAFETY DURING CONSTRUCTION & DEMOLITION.
- TITLE 24, PARTS 1-5 MUST BE KEPT ON THE SITE DURING CONSTRUCTION.
- CHANGES TO STRUCTURAL, ACCESSIBILITY OR FIRE LIFE SAFETY PORTIONS OF THE APPROVED PLANS AND SPECIFICATIONS AFTER THE WORK HAS BEEN LET SHALL BE MADE BY A CONSTRUCTION CHANGE DOCUMENT AS REQUIRED IN SECTION 4-338, PART 1, CAC, AND SHALL BE SUBMITTED TO AND APPROVED BY DSA PRIOR TO COMMENCEMENT OF THE WORK. CONSTRUCTION CHANGE DOCUMENTS SHALL BE PREPARED AND SUBMITTED TO DSA IN COMPLIANCE WITH DSA INTERPRETATION OF REGULATION IR A-6.
- ALL ADDENDA MUST BE STAMPED AND SIGNED BY ARCHITECT/ENGINEER OF RECORD AND DELEGATED DESIGN PROFESSIONAL WHEN APPLICABLE, AND APPROVED BY DSA.
- ALL SUBSTITUTIONS AND REQUESTS FOR INFORMATION (RFI'S) THAT AFFECT STRUCTURAL SAFETY, FIRE LIFE SAFETY, ACCESS COMPLIANCE OR ENERGY (AS APPLICABLE) SHALL BE SUBMITTED TO DSA FOR REVIEW AND APPROVAL AS A CONSTRUCTION CHANGE DOCUMENT.
- PROJECT INSPECTOR AND TESTING LAB MUST BE EMPLOYED BY OWNER AND APPROVED BY A/E OF RECORD AND DSA.
- PROJECT INSPECTOR SHALL HAVE AND MAINTAIN ON THE JOB AT ALL TIMES, THE EDITION OF TITLE 24, PARTS 1-6 REFERRED TO IN THE PLANS AND SPECIFICATIONS PER TITLE 24, PART 1, 4-342, (b)3.
- CONTRACTOR SHALL FIELD VERIFY ALL DIMENSIONS AND EXISTING CONDITIONS AT THE SITE AND SHALL REPORT ANY DISCREPANCIES IN WRITING TO THE CONSTRUCTION MANAGER BY THE MEANS OF A REQUEST FOR INFORMATION (RFI) OR AS PART OF THE APPLICABLE SHOP DRAWING / SUBMITTAL.
- CONTRACTOR IS RESPONSIBLE FOR INCIDENTAL WORK NECESSARY TO COMPLETE THE INSTALLATION OF NEW WORK. THIS INCLUDES, BUT IS NOT LIMITED TO, THE REMOVAL AND/OR REINSTALLATION OF ALL EXISTING ITEMS, OR PORTIONS OF THE EXISTING CONSTRUCTION WHETHER SHOWN OR NOT.
- ALL WORK SHALL BE IN COMPLETE CONFORMANCE WITH MANUFACTURER'S SPECIFICATIONS AND RECOMMENDATIONS OR AS OTHERWISE OUTLINED IN THE SPECIFICATIONS.
- USE OF ANY MATERIALS CONTAINING LEAD OR ASBESTOS IS PROHIBITED.
- THE TERM "TYPICAL" OR "TYP." SHALL BE CONSTRUED TO MEAN APPLYING TO ALL LIKE OR SIMILAR CONDITIONS UNLESS SPECIFICALLY NOTED OTHERWISE.
- GRADING PLANS, DRAINAGE IMPROVEMENTS, ROAD AND ACCESS REQUIREMENTS AND ENVIRONMENTAL HEALTH CONSIDERATIONS SHALL COMPLY WITH ALL LOCAL ORDINANCES.

SCOPE OF WORK

PLACEMENT OF (1) 32'X60' MODULAR BUILDING, INCLUDING BUT NOT LIMITED TO: UTILITY CONNECTIONS; WATER, SEWER, ELECTRICAL, SIGNAL FIRE SPRINKLER AND FIRE ALARM.

CLIMATE ZONES 3

THIS PROJECT REQUIRES A CLASS 3 PROJECT INSPECTOR

DEFERRED SUBMITTALS - NONE

FLOOD HAZARD
PROJECT SITE IS LOCATED IN FLOOD ZONE X. AN AREA OF MINIMAL FLOOD HAZARD

PROJECT TEAM

OWNER
PLUMAS LAKE ELEMENTARY SCHOOL DISTRICT
2743 PLUMAS SCHOOL ROAD
PLUMAS LAKE, CA 95961

TERRY BILADEAU
(530)743-4428 ext. 761
tbladeau@plused.org

ARCHITECT
CA+SA studio
3701 BUSINESS DRIVE, SUITE 200
SACRAMENTO, CA 95820

CHARLES DANDY
(530) 409-3619
charles@casa.studio

ELECTRICAL ENGINEER
M. NEELS ENGINEERING, INC
100 HOWE AVE, SUITE 235
SACRAMENTO, CA 95825

SINISHA GLISIC
(916) 923-4400
SGLisic@mneelengineering.com

SITE SHEET INDEX

GENERAL
A1.1.0 COVER SHEET

CIVIL
C-1.0
C-4.0
C-3.0
C-2.0

ARCHITECTURE
A1.1.1 PRELIMINARY SITE PLAN
A1.1.2 LFA SITE PLAN
A1.1.3 PARTIAL SITE PLAN & DETAILS

ELECTRICAL
E0.1
E1.1
E2.1
E4.1

TOTAL NUMBER OF SHEETS: 12

MANUFACTURERS SHEET INDEX

PLUMAS LAKE ELEMENTARY SCHOOL DISTRICT
2743 PLUMAS SCHOOL ROAD
PLUMAS LAKE, CA 95961

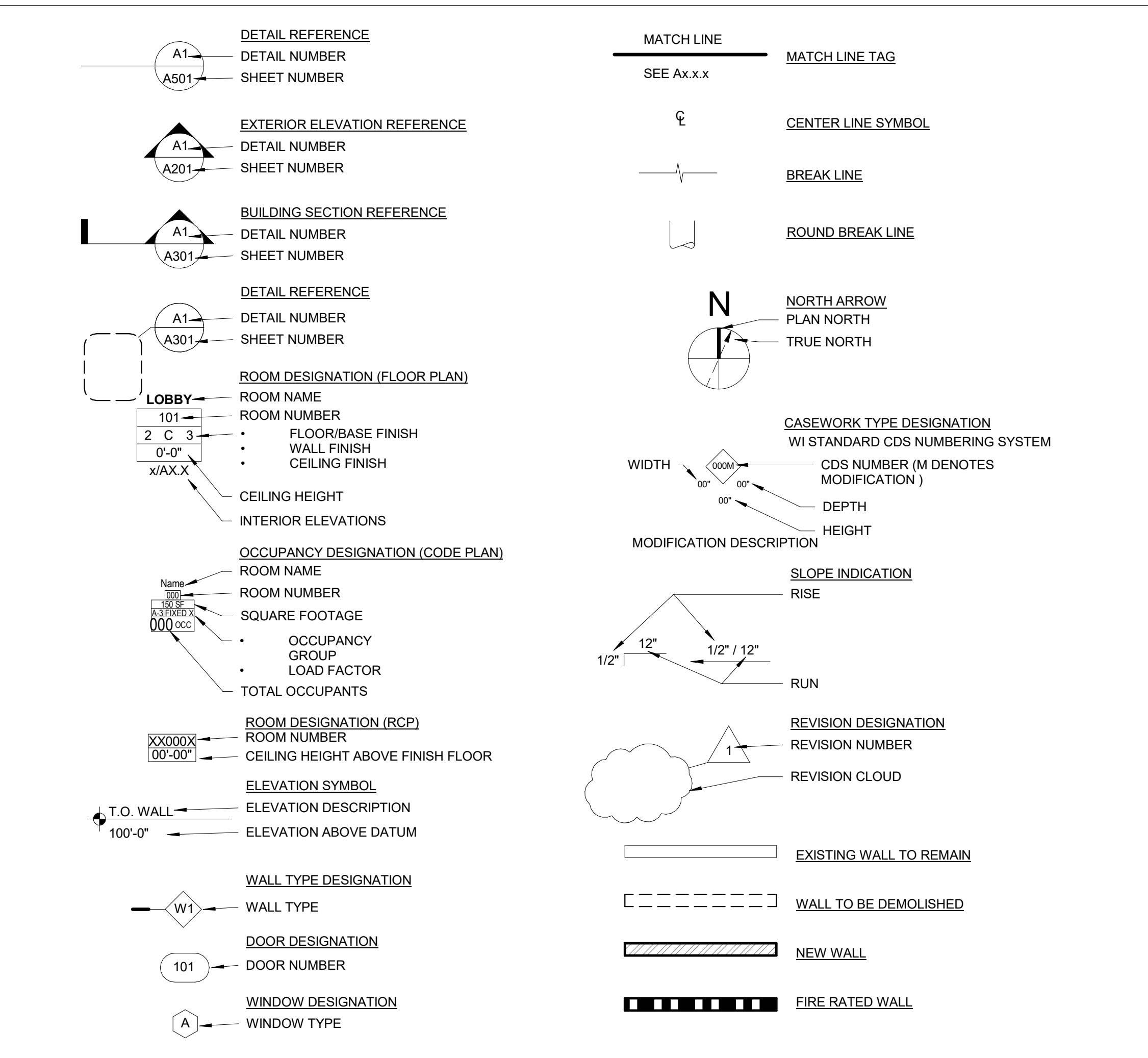


PLUMAS LAKE
ELEMENTARY SCHOOL DISTRICT
2743 PLUMAS SCHOOL ROAD
PLUMAS LAKE, CA 95961

PHASE 2 MODULAR CLASSROOMS AT COBBLESTONE ELEMENTARY SCHOOL

1220 ZANES DR.
OLIVEHURST, CA 95961

DRAWING SYMBOL LEGEND



APPLICABLE CODES

- PARTIAL LIST OF APPLICABLE CODES AS OF JANUARY 1, 2020:**
 2019 CALIFORNIA ADMINISTRATIVE CODE (CAC), PART 1, TITLE 24 CCR
 2019 CALIFORNIA BUILDING CODE (CBC), PART 2, TITLE 24 CCR
 2018 INTERNATIONAL BUILDING CODE, VOL. 1 & 2, AND 2019 CALIFORNIA AMENDMENTS)
 2019 CALIFORNIA ELECTRICAL CODE (CEC), PART 3, TITLE 24 CCR
 (2017 NATIONAL ELECTRICAL CODE AND 2019 CALIFORNIA AMENDMENTS)
 2019 CALIFORNIA MECHANICAL CODE (CMC), PART 4, TITLE 24 CCR
 (2018 IAPMO UNIFORM MECHANICAL CODE AND 2019 CALIFORNIA AMENDMENTS)
 2019 CALIFORNIA PLUMBING CODE (CPC), PART 5, TITLE 24 CCR
 (2018 IAPMO UNIFORM PLUMBING CODE AND 2019 CALIFORNIA AMENDMENTS)
 2019 CALIFORNIA ENERGY CODE (CEC), PART 6, TITLE 24 CCR
 2019 CALIFORNIA FIRE CODE (CFC), PART 7, TITLE 24 CCR
 (2018 INTERNATIONAL FIRE CODE AND 2019 CALIFORNIA AMENDMENTS)
 2019 CALIFORNIA EXISTING BUILDING CODE (CEBC), PART 10, TITLE 24 CCR
 (2018 INTERNATIONAL EXISTING BUILDING CODE AND 2019 CALIFORNIA AMENDMENTS)
 2019 CALIFORNIA GREEN BUILDING STANDARDS CODE (CALGREEN), PART 11, TITLE 24 CCR
 2019 CALIFORNIA REFERENCED STANDARDS CODE, PART 12, TITLE 24 CCR
 TITLE 19 CCR, PUBLIC SAFETY, STATE FIRE MARSHAL REGULATIONS
 2016 ASME A17.1/CSA B44-13 SAFETY CODE FOR ELEVATORS AND ESCALATORS (PER 2019 CBC PART 2 CH 35)
 NOTE: CALIFORNIA ELEVATOR UNIT ENFORCES CCR TITLE 8 AND USES THE 2004 ASME A17.1 BY ADOPTION
- PARTIAL LIST OF APPLICABLE STANDARDS**
 NFPA 13 - STANDARD FOR THE INSTALLATION OF SPRINKLER SYSTEMS (CA AMENDED).....2016 EDITION
 NFPA 14 - STANDARD FOR THE INSTALLATION OF STANDPIPE AND HOSE SYSTEMS (CA AMENDED).....2016 EDITION
 NFPA 17 - STANDARD FOR DRY CHEMICAL EXTINGUISHING SYSTEMS.....2017 EDITION
 NFPA 17A - STANDARD FOR WET CHEMICAL EXTINGUISHING SYSTEMS.....2017 EDITION
 NFPA 20 - STANDARD FOR THE INSTALLATION OF STATIONARY PUMPS FOR FIRE PROTECTION.....2016 EDITION
 NFPA 22 - STANDARD FOR WATER TANKS FOR PRIVATE FIRE PROTECTION.....2013 EDITION
 NFPA 24 - STANDARD FOR THE INSTALLATION OF PRIVATE FIRE SERVICE MAINS AND THEIR APPURTENANCES (CA AMENDED).....2016 EDITION
 NFPA 72 - NATIONAL FIRE ALARM AND SIGNALING CODE (CA AMENDED).....2016 EDITION
 NFPA 80 - STANDARD FOR FIRE DOORS AND OTHER OPENING PROTECTIVES.....2016 EDITION
 NFPA 2001 - STANDARD ON CLEAN AGENT FIRE EXTINGUISHING SYSTEMS (CA AMENDED).....2016 EDITION
 UL 300 - STANDARD FOR FIRE TESTING OF FIRE EXTINGUISHING SYSTEMS FOR PROTECTION OF COMMERCIAL COOKING EQUIPMENT.....2005 (R2010)
 UL 464 - AUDIBLE SIGNALING DEVICES FOR FIRE ALARM AND SIGNALING SYSTEMS, INCLUDING ACCESSORIES.....2003 EDITION
 UL 521 - STANDARD FOR HEAT DETECTORS FOR FIRE PROTECTIVE SIGNALING SYSTEMS.....1999 EDITION
 UL 1971 - STANDARD FOR SIGNALING DEVICES FOR THE HEARING IMPAIRED.....2002 (R2010)
 ICC 300 - STANDARD FOR BLEACHERS, FOLDING AND TELESCOPIC SEATING, AND GRANDSTANDS.....2017 EDITION
 FOR A COMPLETE LIST OF APPLICABLE NFPA STANDARDS REFER TO 2019 CBC (SFM) CHAPTER 35 AND CALIFORNIA FIRE CODE CHAPTER 99
 SEE CALIFORNIA BUILDING CODE CHAPTER 35 FOR STATE OF CALIFORNIA AMENDMENTS TO THE NFPA STANDARDS
 ALL PARTS OF THE 2019 CALIFORNIA BUILDING CODE BECOME EFFECTIVE JANUARY 1, 2020 EXCEPT THE EFFECTIVE DATE FOR THE USE OF THE 2019 BUILDING ENERGY EFFICIENCY STANDARDS (TITLE 24, PART 1, CHAPTER 10) IS JANUARY 8, 2019 AND THE EFFECTIVE DATE FOR THE USE OF THE CALIFORNIA ADMINISTRATIVE CODE (TITLE 24, PART 1, CHAPTER 4) IS JANUARY 6, 201

STATEMENT OF GENERAL CONFORMANCE

FOR ARCHITECTS/ENGINEERS WHO UTILIZE PLANS, INCLUDING BUT NOT LIMITED TO SHOP DRAWINGS, PREPARED BY OTHER LICENSED DESIGN PROFESSIONALS AND/OR CONSULTANTS

(Application No. 02-____ File No. ___-___)

The drawings or sheets listed on the cover or index sheet (signed by other than the Architect of Record)

This drawing, page of specifications/calculations

have been prepared by other design professionals or consultants who are licensed and/or authorized to prepare such drawings in this state. It has been examined by me for:

- design intent and appears to meet the applicable requirements of Title 24, California Code of Regulations and the project specifications prepared by me, and
- coordination with my plans and specifications and is acceptable for incorporation into the construction of this project.

The Statement of General Conformance "shall not be construed as relieving me of my rights, duties, and responsibilities under Sections 17302 and 81138 of the Education Code and Sections 4-336, 4-341 and 4-344' of title 24, part 1, (Title 24, Part 1, Section 4-317 (b))

I find that:

All drawings or sheets listed on the cover or index sheet
This drawing or page

is/are in general conformance with the project design, and

has/have been coordinated with the project plans and specifications.

Signature _____ Date _____ / / 2021

Architect or Engineer designated to be in general responsible charge

Kip Davis Grubb
Name
C-19022
License Number

November 30, 2021
Expiration Date

REVISIONS		
No.	Description	Date

PROJECT No.: 2021-016.00

CONTRACT DOCUMENTS

COVER SHEET

A1.1.0



ACCESS COMPLIANCE STATEMENT

DESIGN PROFESSIONAL IN GENERAL RESPONSIBLE CHARGE STATES:

THE PATH OF TRAVEL (POT) IDENTIFIED IN THESE CONSTRUCTION DOCUMENTS IS COMPLIANT WITH THE CURRENT APPLICABLE CALIFORNIA BUILDING CODE (CBC) ACCESSIBILITY PROVISIONS FOR PATH OF TRAVEL REQUIREMENTS FOR ALTERATIONS, ADDITIONS AND STRUCTURAL REPAIRS. AS PART OF THE DESIGN OF THIS PROJECT, THE POT WAS EXAMINED AND ANY ELEMENTS, COMPONENTS OR PORTIONS OF POT THAT WERE DETERMINED TO BE NONCOMPLIANT HAVE:

- BEEN IDENTIFIED ON THESE PLANS
- THE CORRECTIVE WORK NECESSARY TO BRING THEM INTO COMPLIANCE HAS BEEN INCLUDED WITHIN THE SCOPE OF THE PROJECT'S WORK THROUGH DETAILS, DRAWINGS AND SPECIFICATION INCORPORATED INTO THESE CONSTRUCTION DOCUMENTS.

ANY NONCOMPLIANT ELEMENTS, COMPONENTS OR PORTIONS OF THE POT THAT WILL NOT BE CORRECTED BY THIS PROJECT BASED ON VALUATION THRESHOLD LIMITATIONS OR A FINDING OF UNREASONABLE HARSHNESS ARE SO INDICATED IN THESE CONSTRUCTION DOCUMENTS.

DURING CONSTRUCTION, IF POT ITEMS WITHIN THE SCOPE OF THE PROJECT REPRESENTED AS CODE COMPLIANT ARE FOUND TO BE NONCOMPLYING BEYOND REASONABLE CONSTRUCTION TOLERANCES, THEY SHALL BE BROUGHT INTO COMPLIANCE WITH CBC AS A PART OF THIS PROJECT BY MEANS OF A CONSTRUCTION CHANGE DOCUMENT.

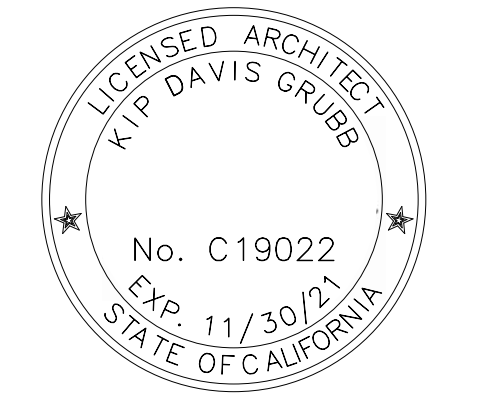
ACCESSIBLE ROUTE COMPONENTS INCLUDE BUT ARE NOT LIMITED TO:

- AT LEAST 48" IN WIDTH; OR AS APPROVED BY CODE;
- WITHOUT ABRUPT LEVEL CHANGES EXCEEDING 1/2" IF BEVELED AT 1:2 MAXIMUM SLOPE, OR VERTICAL LEVEL CHANGES EXCEEDING 1/4";
- WITH A FIRM, STABLE AND SLIP RESISTANT WALKING SURFACE;
- WITH A RUNNING SLOPE OF 1:20 OR LESS;
- WITH RUNNING SLOPE OF CODE COMPLIANT RAMPS, NOT TO EXCEED 8.33% (1:12); (RAMPS COMPLY WITH 11B-405);
- WITH REQUIRED LANDINGS AND LEVEL AREAS WITH SLOPE 1:48 (1/4" FT.) OR LESS;
- WITH A CROSS SLOPE OF 1:48 (1/4" FT.) OR LESS;
- WITH OPENINGS IN DRAINS AND GRATING NOT TO EXCEED 1/2" IN PREDOMINANT DIRECTION OF TRAVEL;
- IS FREE OF OVERHEAD OBSTRUCTIONS WITHIN 80" ABOVE THE WALKING SURFACE; AND
- IS FREE OF OBJECTS WHICH PROTRUDE MORE THAN 4" BETWEEN THE HEIGHTS OF 27" AND 80" ABOVE THE WALKING SURFACE

DSA APP. NO: -



STUDIO
3701 Business Drive Suite 200
Sacramento, CA 95820
Phone: (916) 365-9655



LEGEND

- (N) 32'x60' MODULAR BUILDING
SEE MANUFACTURER'S DRAWINGS PC _ DSA APP# _
- (E) ACCESSIBLE BOYS & GIRL'S TOILET ROOMS
DSA APPLICATION #02-107458
- (E) STAFF TOILET ROOM
DSA APPLICATION #02-107458
- (E) ACCESSIBLE DRINKING FOUNTAIN
DSA APPLICATION #02-107458
- ACCESSIBLE PATH OF TRAVEL

PARKING DATA

STANDARD PARKING STALLS	67
ACC. PARKING STALLS REQUIRED PER CBC TABLE 11B-208.2	3
ACC. PARKING PROVIDED:	
STANDARD	3
VAN	1
TOTAL ACCESSIBLE PARKING PROVIDED	4

DSA CAMPUS SUMMARY

BLDG. ID	BLDG. USE	OCCUPANCY	CONST. TYPE	PAST DSA APPLICATIONS
(E) UNIT A	ADMINISTRATION	B	TYPE V-N	DSA #: 02-107458
(E) UNIT B	MULTI-USE	A-2.1	TYPE V-1 HR	DSA #: 02-107458
(E) UNIT C	L.R.C.	E	TYPE V-N	DSA #: 02-107458
(E) UNIT D	CLASSROOMS	E	TYPE V-N	DSA #: 02-107458
(E) UNIT E	CLASSROOMS	E	TYPE V-N	DSA #: 02-107458
(E) UNIT F	CLASSROOMS	E	TYPE V-N	DSA #: 02-107458
(E) UNIT G	KINDERGARTEN	E	TYPE V-N	DSA #: 02-107458
(E) UNIT H1	PORTABLE CR	E	TYPE V-N	DSA #: 02-107458
(E) IH1	PORTABLE CR	E	TYPE V-N	DSA #: _ _ _ _
(E) IH2	PORTABLE CR	E	TYPE V-N	DSA #: _ _ _ _



PLUMAS LAKE
ELEMENTARY SCHOOL DISTRICT
2743 PLUMAS SCHOOL ROAD
PLUMAS LAKE, CA 95961

PHASE 2 MODULAR CLASSROOMS AT COBBLESTONE ELEMENTARY SCHOOL

1220 ZANES DR.
OLIVEHURST, CA 95961

REVISIONS

No.	Description	Date

CODE ANALYSIS

CONSTRUCTION TYPE: V-B
GROUP: E

(N) UNIT H2 1920 SF

1920 SF < 9,500 SF THEREFORE O.K.
BASIC ALLOWABLE AREA BASED ON CBC 2019, TABLE 503: 9,500 SF - SINGLE STORY

OCCUPANT LOAD FACTORS - PER CBC TABLE 1004.1.1 - MAXIMUM FLOOR AREA ALLOWANCES PER OCCUPANT
CLASSROOM - AREA PER OCCUPANT 20 SF
CLASSROOM BUILDING UNIT H2 1920 SF / 20 SF = OCC. 96

PROJECT No.: 2021-016.00
CONTRACT DOCUMENTS

PRELIMINARY SITE PLAN

A1.1.1



LEGEND

 (N) 32'x60' MODULAR BUILDING
SEE MANUFACTURER'S DRAWINGS PC_DSA APP# _

DSA CAMPUS SUMMARY

BLDG. ID	BLDG. USE	OCCUPANCY	CONST. TYPE	PAST DSA APPLICATIONS
(E) UNIT A	ADMINISTRATION	B	TYPE V-N	DSA #: 02-107458
(E) UNIT B	MULTI-USE	A-2.1	TYPE V-1 HR	DSA #: 02-107458
(E) UNIT C	L.R.C.	E	TYPE V-N	DSA #: 02-107458
(E) UNIT D	CLASSROOMS	E	TYPE V-N	DSA #: 02-107458
(E) UNIT E	CLASSROOMS	E	TYPE V-N	DSA #: 02-107458
(E) UNIT F	CLASSROOMS	E	TYPE V-N	DSA #: 02-107458
(E) UNIT G	KINDERGARTEN	E	TYPE V-N	DSA #: 02-107458

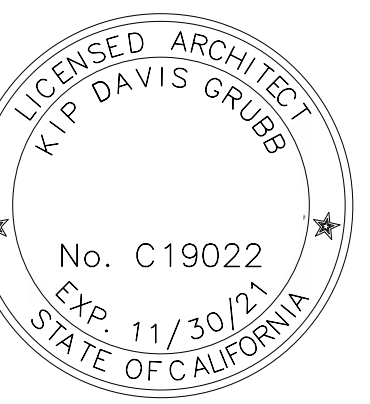
DSA 810

DSA APP. NO: _ -



STUDIO

3701 Business Drive Suite 200
Sacramento, CA 95820
Phone: (916) 365-9655



PLUMAS LAKE
ELEMENTARY SCHOOL DISTRICT
2743 PLUMAS SCHOOL ROAD
PLUMAS LAKE, CA 95961

PHASE 2 MODULAR CLASSROOMS AT COBBLESTONE ELEMENTARY SCHOOL

1220 ZANES DR.
OLIVEHURST, CA 95961

REVISIONS

No.	Description	Date

PROJECT No.: 2021-016.00

CONTRACT DOCUMENTS

LFA SITE PLAN

A1.1.2



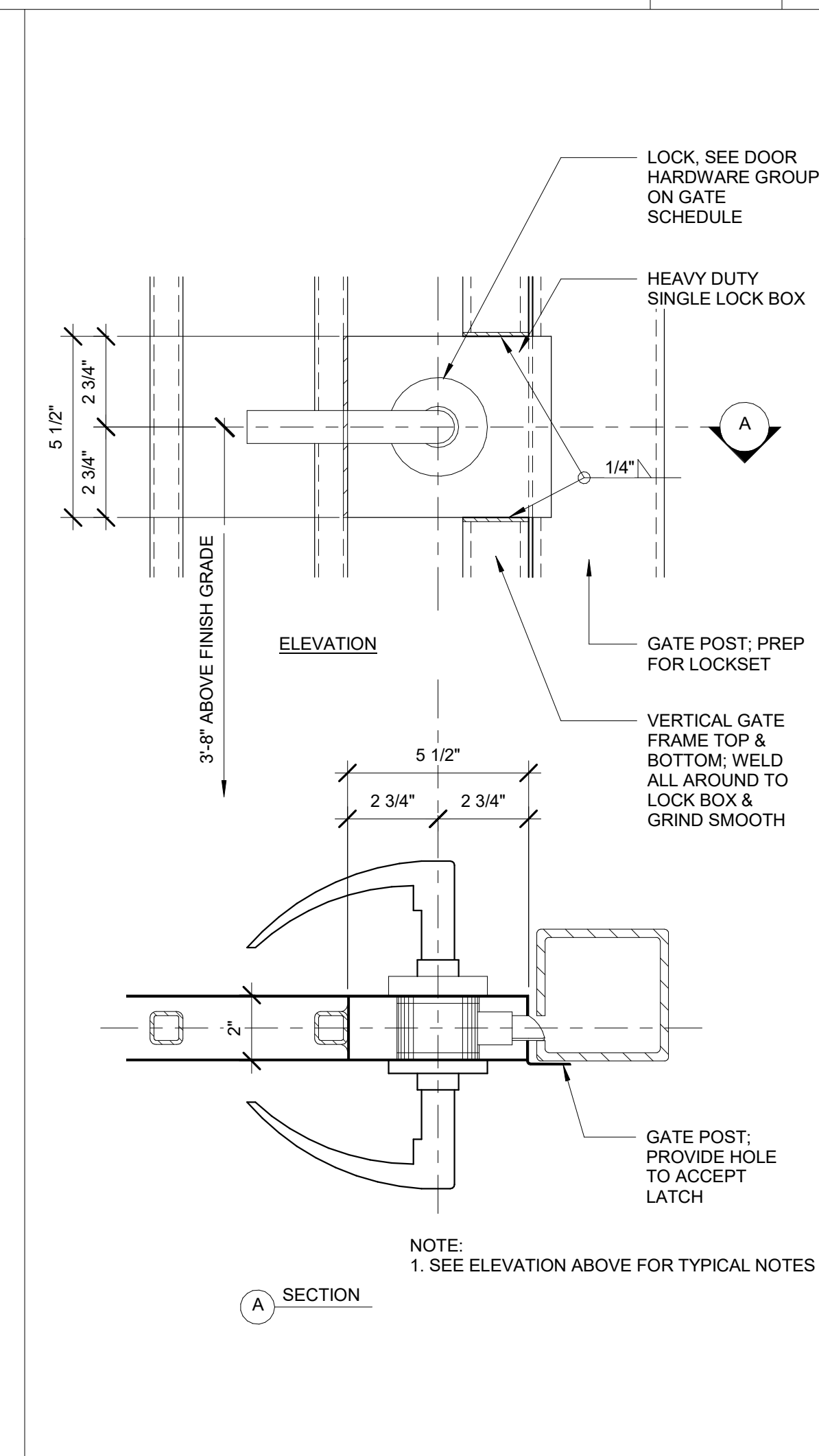
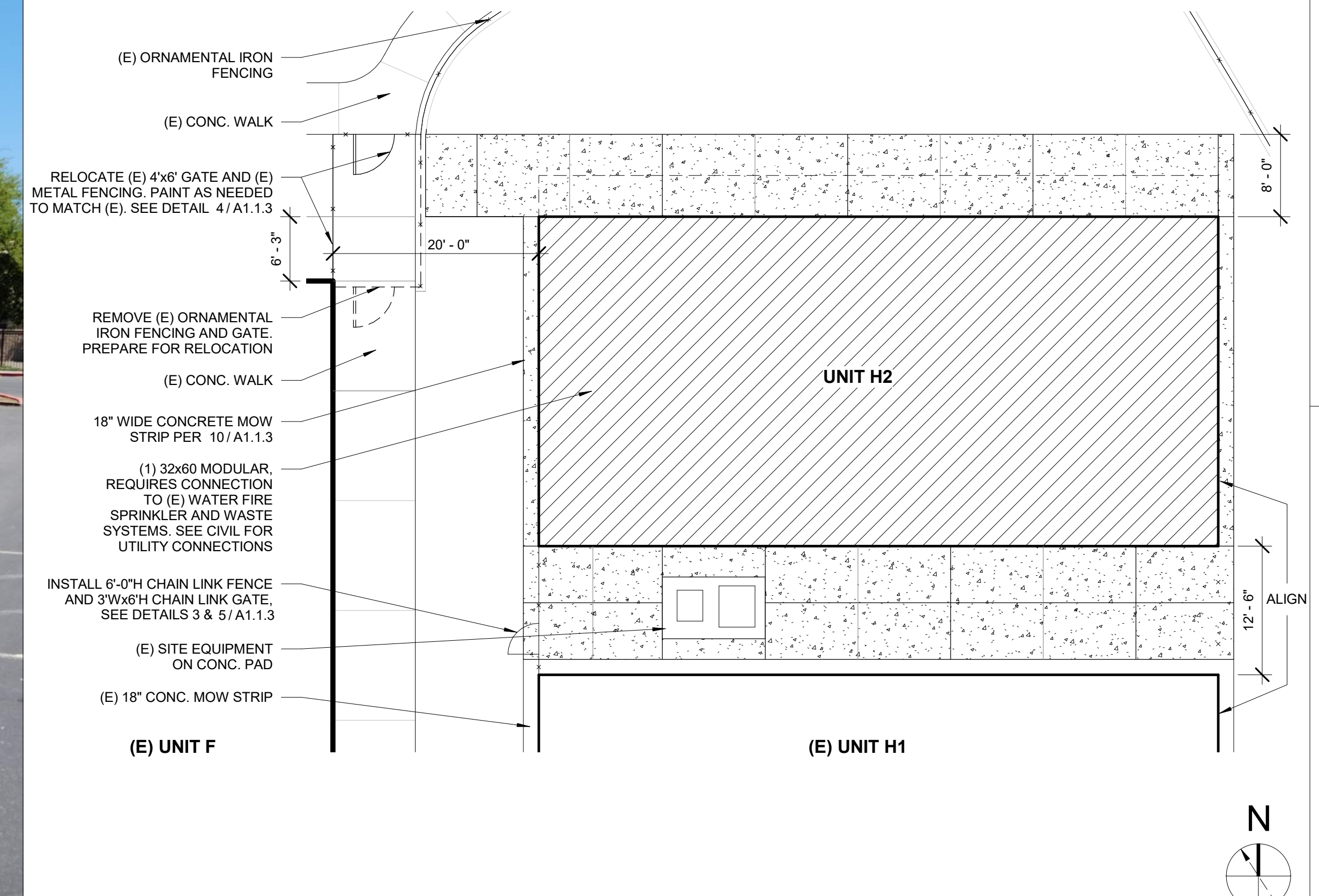


EXISTING ACCESSIBLE PARKING

NO SCALE 12

ENLARGED SITE PLAN

1" = 10'-0" 2

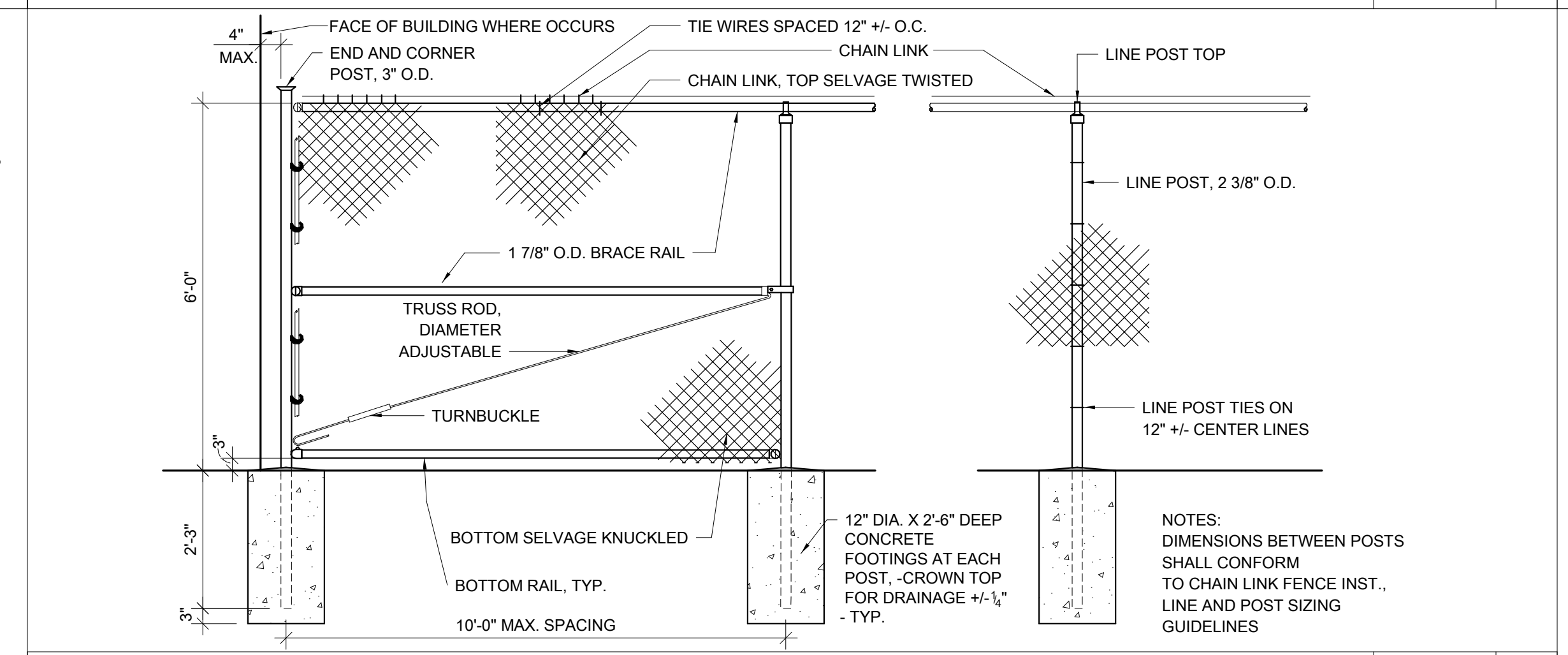


(E) ACCESSIBLE GATE LATCH

3" = 1'-0" 14

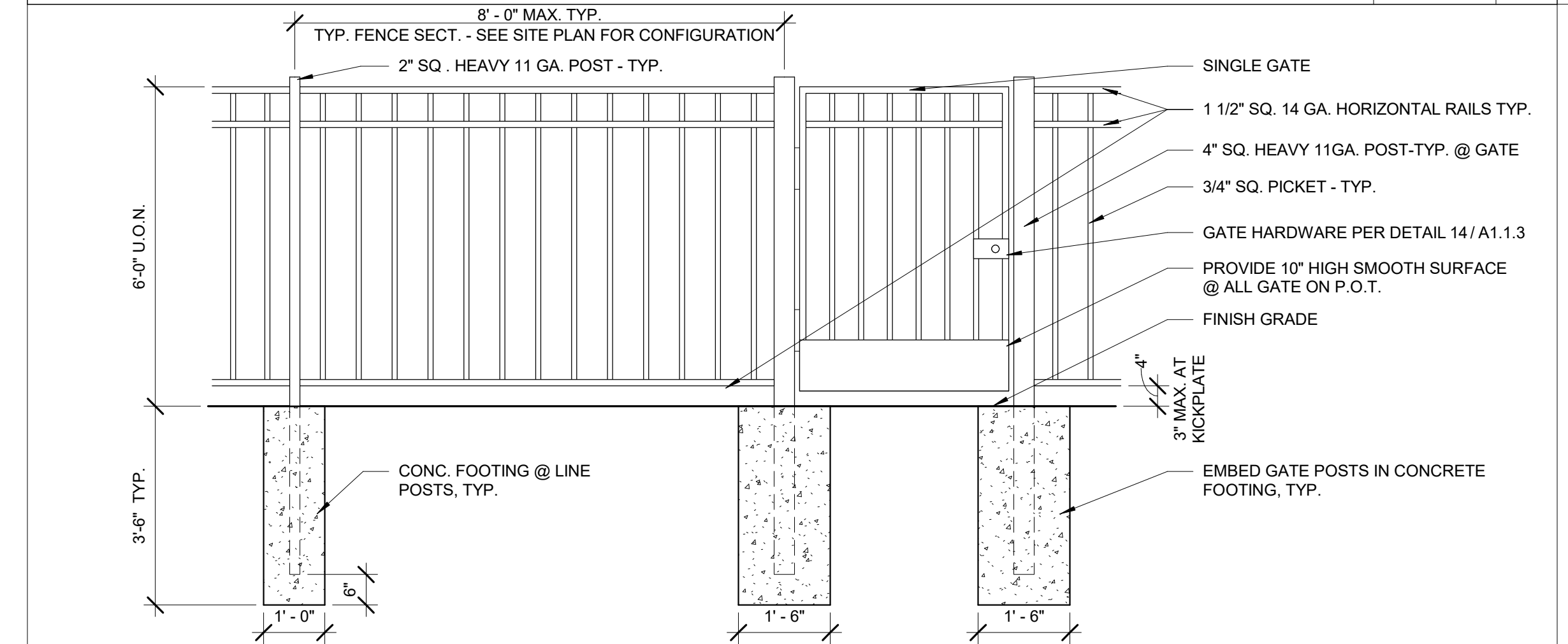
ORNAMENTAL METAL FENCE AND GATE

1/2" = 1'-0" 4



CHAIN LINK FENCE

1/2" = 1'-0" 3

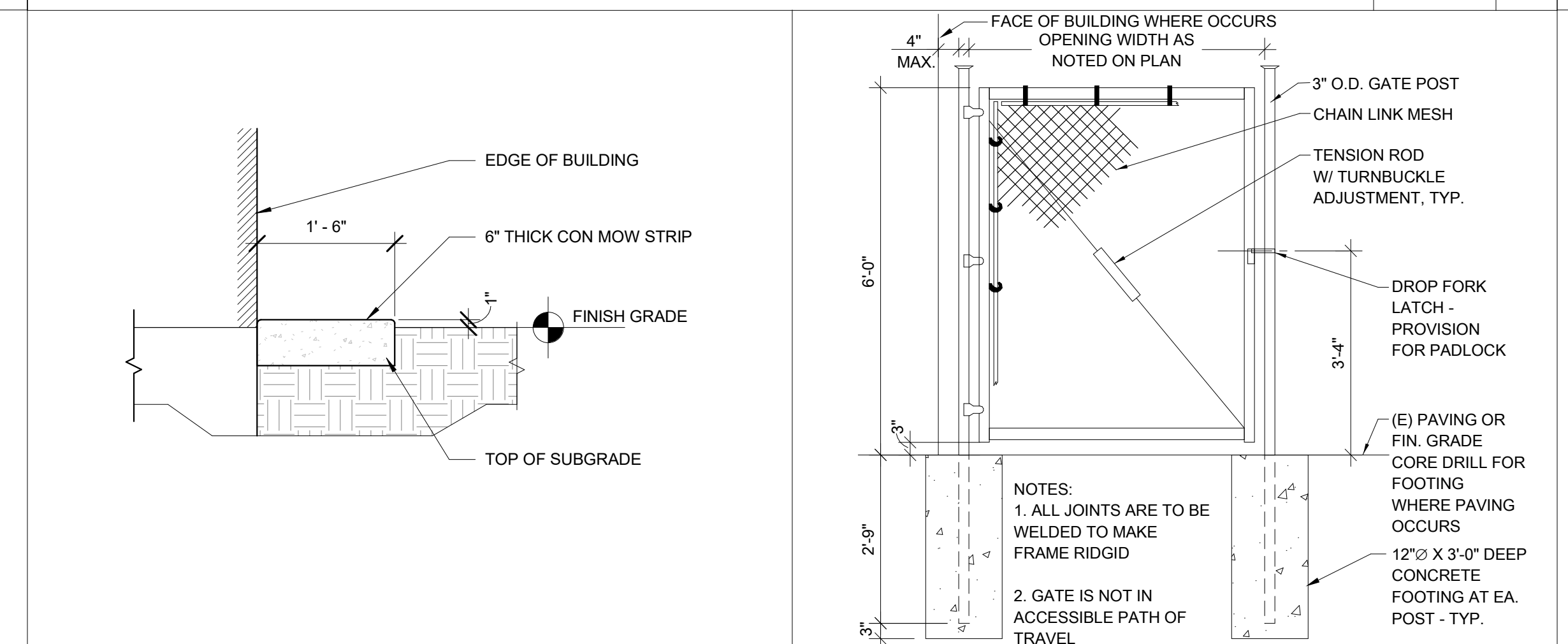


MOWSTRIP AT BUILDING EDGE

3/4" = 1'-0" 10

CHAIN LINK GATE

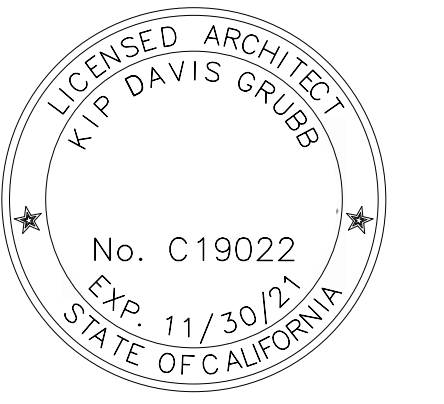
1/2" = 1'-0" 5



DSA APP. NO: -



STUDIO
3701 Business Drive Suite 200
Sacramento, CA 95820
Phone: (916) 365-9655



PLUMAS LAKE
ELEMENTARY SCHOOL DISTRICT
2743 PLUMAS SCHOOL ROAD
PLUMAS LAKE, CA 95961

PHASE 2 MODULAR
CLASSROOMS AT
COBBLESTONE
ELEMENTARY
SCHOOL

1220 ZANES DR.
OLIVEHURST, CA 95961

REVISIONS

No.	Description	Date

PROJECT No.: 2021-016.00
CONTRACT DOCUMENTS

PARTIAL SITE
PLAN & DETAILS

A1.1.3